

Aficio™ 1075

Aficio™



**Compact Powerhouse with  
1,200 x 1,200 dpi Output**

**RICOH**  
Image Communication

# The Document Solution for Top Quality Output, Storage and Professional Finishing

With the new Aficio™1075 Ricoh offers a revolutionary system that combines top quality output, maximum productivity and high reliability all in a compact design. With true 1,200 x 1,200 dpi resolution, the Aficio™1075 offers unrivalled output quality for both short and long runs. The unique one-pass duplex document feeder boosts productivity, scanning both single- and double-sided documents at 75 images per minute. In addition it produces less noise and minimises the chance of originals being damaged! Documents can be scanned for print on demand, stored on the network or sent to any e-mail address in the world. To add a professional touch, you can finish your output according to your precise needs. Stapling, punching, booklet making with colour cover insertion? The Aficio™1075 effortlessly handles it all. And even with such a range of capabilities, this 75 ppm powerhouse remains easy to operate and requires less space than you would expect! As either the central machine in your organisation or as a back-up, the Aficio™1075 is the productive multi-functional partner you are in need of!



# Top-speed Multi-functional Performance

Ideally equipped to increase your organisation's professionalism and productivity, the Aficio™1075 offers impeccable quality at 1,200 dpi. Your productivity is also thought of: this system effortlessly takes care of all your demands or functions as a reliable preparation unit/back-up system for larger high-volume devices.



Printing at 75 pages per minute makes the Aficio™1075 an asset for any organisation.

## The World's First 1,200 dpi System

To meet today's quality standards, top quality output is essential. Designed with Ricoh's advanced image processing technology, the Aficio™1075 is the first multi-functional system in its class producing high quality output at true 1,200 x 1,200 dpi. Thanks to the 'Scan Once, Copy Many' principle, originals are scanned only once, stored into memory and reproduced from there with true 1,200 dpi resolution. As a result, your output is always impeccable whether you need 1 or 1,000 sets.

## Optimised Productivity

The Aficio™1075 is perfectly suited to handle all your time-consuming jobs. With a continuous input/output speed of 75 pages per minute<sup>1</sup> (simplex **and** duplex), this multi-functional system delivers quick and accurate output. To maximise throughput time, the Aficio™1075's one-pass duplex document feeder allows you to scan double-sided originals in a single pass. With up to 8,300 sheets on board, even the longest runs can be tackled without any interruption. Looking for extra speed and capacity? By linking two Aficio™1075's you can double the output speed up to 150 pages per minute and tackle large volume jobs instantly. Should one machine go off-line, the 'connect job' will automatically be completed by the other.

## From Versatile Job Preparation to Customised Finishing

With the Aficio™1075, your entire workflow will run smoother than ever. Job preparation is effortless and frequent jobs can be pre-set for future time saving. Printing with Ricoh's award-winning printer language RPCS™ is quick and efficient - just one click and your print job is on its way. As for finishing: with a choice of three different finishers, you can customise the Aficio™1075 to your precise needs for highly professional output.

## Easy to Use and Reliable

Even with this wealth of functionalities, the Aficio™1075 requires fewer steps to program a job. With the system's large LCD touch screen you can make and view all settings on one screen and program jobs in no time. Printing is just as user-friendly: thanks to Ricoh's RPCS™ driver the whole process is turned into a one-click operation. Reliability and compactness are also among the Aficio™1075's strengths. As intervals between service times are long, costs are reduced to a minimum. To top it off, this multi-functional device boasts a low noise level and remains remarkably compact.

<sup>1</sup> Also available is the Aficio™1060, equal to the Aficio™1075 but offering a 60 pages per minute output speed.



Professional quality output is guaranteed with the Aficio™1075's 1,200 x 1,200 dpi resolution.

Aficio™1075
X = 1,704 mm
Y = 750 mm
Z = 1,165 mm



# Professional Input, Throughput and Output

The Aficio™1075 provides you with all the necessary tools for a smooth and efficient production workflow. From easy programming and time-efficient job preparation to customised finishing, this system streamlines your workflow from beginning to end.



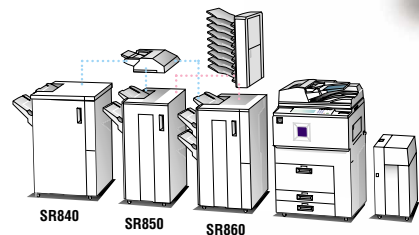
## The Ultimate Finishing Touch for Booklets

With the Aficio™1075 there are two available methods of booklet making. The first, the SR860 bookletfinisher, is ideal if you frequently need finished booklets. The second is the optional online SR85 bookletmaker, with which you can produce large quantities of professionally finished A5 and A4 booklets.

This option not only automatically saddle stitches the booklet, it can also trim the edges for the professional final touch.

## Print on Demand

The Aficio™1075 is equipped with the unique document server. This allows you to store frequently used documents on the hard disk for retrieval at any time. After scanning your job simply save it on the document server so it is ready for you to print when you need it, in the quantity you need. Stored documents can also be retrieved from your PC using DeskTopBinder™.



## Flexible Finishing Possibilities

Highly professional finishing of presentation material, brochures, folders etc. can all be done with the Aficio™1075. With 3 types of finishing options available including a booklet finisher for the in-house production of small quantities of booklets, the Aficio™1075 can be customised to your precise needs.

*The image on this double page is not a real photograph and slight differences in detail might appear.*



### Professional Finishing

With the Aficio™1075 you can add a professional touch to your print and copy output. Up to four different types of paper can be combined in one document. For example, a cover, tab sheet or coloured paper could all be included in a single document.



### User-friendly Scanning

The Aficio™1075 makes digitising documents a flexible, simple and user-friendly process. Sheets, books, magazines and even non-standard originals can be scanned and stored locally on the machine's hard disk, sent to any PC in the network or e-mailed to any address anywhere in the world.

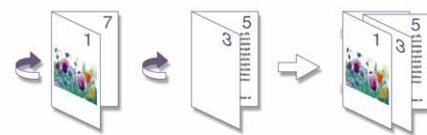
### Time-efficient Job Preparation

The Aficio™1075 simplifies even the most complex print jobs. You can save different settings for a variety of print jobs under your own icons and start print jobs by clicking only once. You save extra time and the chance of making a mistake is virtually excluded.



### Versatile Colour Cover Insertion

For the ultimate finishing touch, you can also add a pre-printed cover to your meeting reports, presentation handouts and other output with the Aficio™1075's colour cover interposer.



### Straightforward Operation

The Aficio™1075 is designed to make your life easier. Thanks to the large and logically organised LCD touch screen, even the most complex jobs can be programmed in a few simple steps. This will not only save you time but eliminates the chance of wrong output.



### Abundant and Flexible Paper Capacity

The Aficio™1075 completes demanding jobs in one smooth run. Thanks to its large paper capacity of up to 8,300 sheets frequent refills are omitted, giving you time for other pending tasks. With up to five different paper stations you can handle a wide variety of paper types. To name but a few of the possibilities: colour covers, tab sheets, appendices etc. can all be combined into one document.



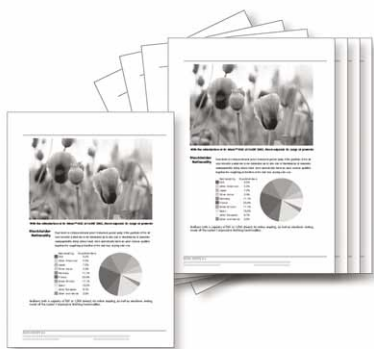
### Ultra-fast Original Feeding

Thanks to the unique one-pass duplex document feeder, the Aficio™1075 will feed both single- and double-sided originals at 75 images per minute, thus enhancing the overall productivity of the machine. As double-sided originals are scanned in one single pass, faster, quieter and more reliable original feeding is guaranteed at all times.



# Taking Care of your Document Workflow

The document workflow your organisation has to cope with daily can be huge. User-friendly print procedures and efficient data control is therefore essential. Thanks to Ricoh's easy-to-use RPCS™ driver, highly productive printing is guaranteed. Additionally, the system's bundled software packages allow you to store, access and manage all your data.



The Sample Print™ function prints the first of your multiple sets for you to verify and adapt as necessary before outputting the remaining sets.

## Optimised Print Productivity

Ricoh's printer language RPCS™ stands for fast, efficient and easy printing. With its icon-based interface, any print job - no matter how complex - is only one click away. Most common print jobs are pre-defined under specific icons and you can save your own print settings under a personal icon including a name for future one-click use. As a result, programming print jobs takes only seconds and mistakes are avoided.

## Multiple Set Printing

To eliminate errors and unnecessary costs when producing multiple sets, you can take advantage of the Aficio™1075's Sample Print™ function. You simply send your print command, verify the first set and make any necessary changes before outputting the rest.

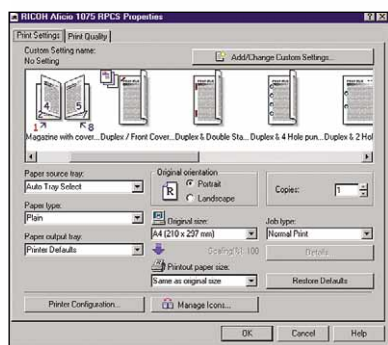
## Professional Data Scanning

Keeping all your data at hand does not necessarily imply storing huge piles of paper or overflowing archive cabinets. With the Aficio™1075 scanning is a user-friendly and straightforward process. You can effortlessly digitise all documents originating from print,

copy and scan data using the system's document server. With the bundled ScanRouter™ V2 Lite software, you can also scan documents to your PC via the ScanRouter™ delivery server. And to further optimise digital document management and guarantee an organised workflow, scanned images can be routed and distributed via the network. ScanRouter™ V2 Lite will also notify you of the availability of scanned documents. Further scan flexibility is included with the "scan to e-mail" functionality which enables you to scan documents and send them to any e-mail address anywhere in the world. Up to 2,000 frequently used addresses can be stored manually or automatically in the machine's memory.

## Efficient Storage

After converting your documents to images, you can proceed to store them on the Aficio™1075's document server, which acts as a central document storage centre. As all files originating from print, copy and scan data are saved digitally, they can be easily and quickly accessed for print on demand. Via the system's bundled software package you have the ability to view, retrieve, edit and manage information stored on the document server.



The icon-based interface of the RPCS™ allows you to save frequently used print settings under special icons.



Scanned and stored documents can be printed on demand, sent as an e-mail attachment or re-distributed over your network.

# Future-ready Document and Device Management

To meet today's demands as well as tomorrow's challenges, you require a multi-functional system that grows with you. Thanks to Ricoh's standard software package, the Aficio™1075 is synonym for complete and efficient document management. Add to that a variety of upgrading possibilities and you obtain a high-performance and efficient document solution.

## Highly Professional Document Management

The Aficio™1075's standard software package provides efficient document management from the network or the convenience of your desktop. DeskTopBinder™ V2 Lite enables you to retrieve data swiftly from your document server at any time, as well as view files, re-organise them, change their characteristics or even delete them. In short: a variety of possibilities to streamline your entire document flow.

## Efficient File Merging

Presentations usually include information from various electronic sources such as text files, spreadsheets, slides, etc. Integrating this material into one solid presentation is quite time-consuming. Thanks to the Aficio™1075's DeskTopBinder™ V2 Lite software, you can merge files created in several electronic formats - Word, Excel, PowerPoint® etc. - and print them as one set. And of course this 'merged' file can be reproduced as many times as you want and finished according to preference.

## Saving Storage Space

With the Aficio™1075, you no longer need to store large quantities of paper output. Documents and print jobs stored on the system's document server can be retrieved at any time for on-demand printing. Users connected to the network can also digitally re-distribute any of the stored data.

## Versatile Network Connectivity and Printer Management

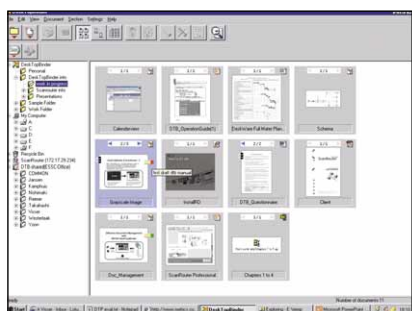
The Aficio™1075 as a printer integrates with virtually all common network environments via the standard interface and the USB option. Equipped with an IEEE 1394 interface board, this system stands for scalability and superb ease of use. Thanks to Wireless LAN, you can even print across rooms without network cables. Managing the Aficio™1075 is easy too: via the SmartNetMonitor™ and Web Status Monitor software, you can monitor all Aficio™ devices, and assign codes to users to allocate costs and reduce unnecessary expenses.

## Advanced Management Possibilities

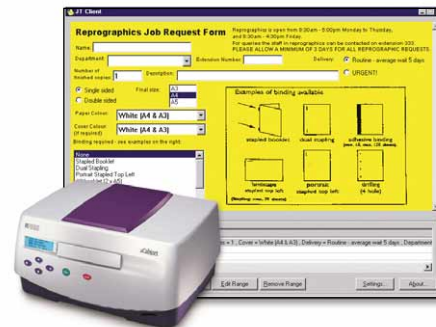
Apart from the standard software packages, the Aficio™1075 offers a wide range of interesting upgrading possibilities. For impressive storage, effortless capture and easy retrieval of all office documents, you can connect Ricoh's eCabinet™ to your network. Extra document management possibilities can be obtained with ScanRouter™ V2 Professional/DeskTopBinder™ V2 Professional. Enhanced print cost management can be enjoyed via Printer Cost and Security Manager, while doc-Q-manager offers you features such as 'print queue management', 'split, copy and move jobs', 'job ticketing', 'preview jobs' (without opening the application) and variable data printing. doc-Q-manager Corporate Workgroup automatically redirects big print jobs from desktop printers and mid-size workgroup MFPs to the Aficio™1075, increasing efficiency and reducing costs.



With DeskTopBinder™ V2 Lite software you can merge files from different electronic formats - Word, Excel, PowerPoint®, etc. - into one set.



ScanRouter™ V2/DeskTopBinder™ V2 Professional software and the Aficio™1075 offer you extra document management possibilities.



Impressive additional capturing, storing and retrieving capabilities are offered by Ricoh's eCabinet™, while the doc-Q-manager software provides extended print job and output management.

## Specifications

### General

Configuration:	Console
Copying process:	Four laser beam and electro-photographic printing
Continuous output speed:	75 pages per minute <sup>1</sup>
Multiple copy:	Up to 999
Warm-up time:	5 minutes or less
First output speed:	3.5 seconds
Dimensions (W x D x H):	690 x 750 x 1,165 mm
Weight:	Less than 200 kg
Power source:	220 - 240 V, 50/60 Hz
Power consumption:	Maximum 1.75 kW/h
Input capacity:	
Standard:	2 x 1,550-sheet tandem tray 2 x 550-sheet paper tray 100-sheet bypass tray
Maximum:	8,300 sheets
Output capacity:	3,750 sheets
Paper size:	A6 - A3
Paper weight:	
Paper tray:	52 - 128 g/m <sup>2</sup>
Bypass tray:	52 - 216 g/m <sup>2</sup>

### Printer (option)

Processor:	RM7000A (QED) 375 MHz
Continuous print speed:	75 prints per minute <sup>1</sup>
Memory:	
Standard:	128 MB
Maximum:	384 MB
Hard disk drive:	40 GB
Printer languages/resolution:	
PCL6/RPCS™:	1,200 x 1,200 dpi
Adobe® PostScript® 3™ (optional):	1,200 x 1,200 dpi
PCL5e:	300/600 dpi
Network protocols:	TCP/IP, IPX/SPX, EtherTalk, NetBEUI

Supported networks: Windows®  
95/98/Me/NT4.0/2000/XP<sup>2</sup>  
Macintosh 7.6.1 or later  
UNIX Solaris 2.5.1, 2.6, 7, 8

### Interface:

Standard:	Bi-directional IEEE 1284 ECP Ethernet 10 base-T/100 base-TX
Option:	IEEE 1394 USB 2.0 Wireless LAN (IEEE 802.11b)

### Scanner (option)

Resolution:	100 - 1,200 dpi
Maximum original size:	A3
Output format:	PDF, TIFF, JPEG
Bundled drivers:	Network, Twain
Scan to e-mail:	Via SMTP Gateway or TCP/IP

### Options

- Printer module
- Printer/scanner module
- Adobe® PostScript® 3™
- 3,000-sheet finisher with 100-sheet stapler SR840
- 3,000-sheet finisher with 50-sheet stapler SR850
- 3,000-sheet finisher with saddle stitch SR860
- 4,000-sheet large capacity tray RT43
- SR85 bookletmaker/TR85 trimmer/SR85 cover interposer
- Punch unit (2/4 switchable hole punch, Scandinavian 4 hole punch)
- Cover interposer
- 9-bin mailbox
- Copy connect kit

### Software (standard with printer module)

- SmartNetMonitor™
- Web Status Monitor
- DeskTopBinder™ V2 Lite
- ScanRouter™ V2 Lite (standard with printer/scanner module)

<sup>1</sup> Also available is the Aficio™1060, equal to the Aficio™1075 but offering a 60 pages per minute output speed.

<sup>2</sup> For availability of models, optional apparatus and software, please consult your local Ricoh supplier.



Ricoh has determined that this product meets the ENERGY STAR guidelines for energy efficiency.

Ricoh believes in conserving the earth's precious natural resources.

All brand and/or product names are trademarks of their respective owners.

Specifications and external appearance are subject to change without notice. The colour of the actual product may vary from the colour shown in this brochure.

# RICOH

Image Communication Home Page: <http://www.ricoh-europe.com>

RICOH EUROPE B.V. Groenelaan 3, P.O. Box 114, 1180 AC Amstelveen, The Netherlands. Phone: +31 (0)20-5474111 Fax: +31 (0)20-6418601

For more information, please contact: